

FOR SALE



**PEARSON
REALTY**
AGRICULTURAL PROPERTIES
A Tradition in Trust Since 1919

Madera Pistachios



48.20± Acres
Madera County, California

- Income producing pistachios
- Micro-sprinkler irrigation system
- 40 HP pump & well

Exclusively Presented By:
Pearson Realty



CALIFORNIA'S LARGEST AG BROKERAGE FIRM

www.pearsonrealty.com

CA DRE #00020875



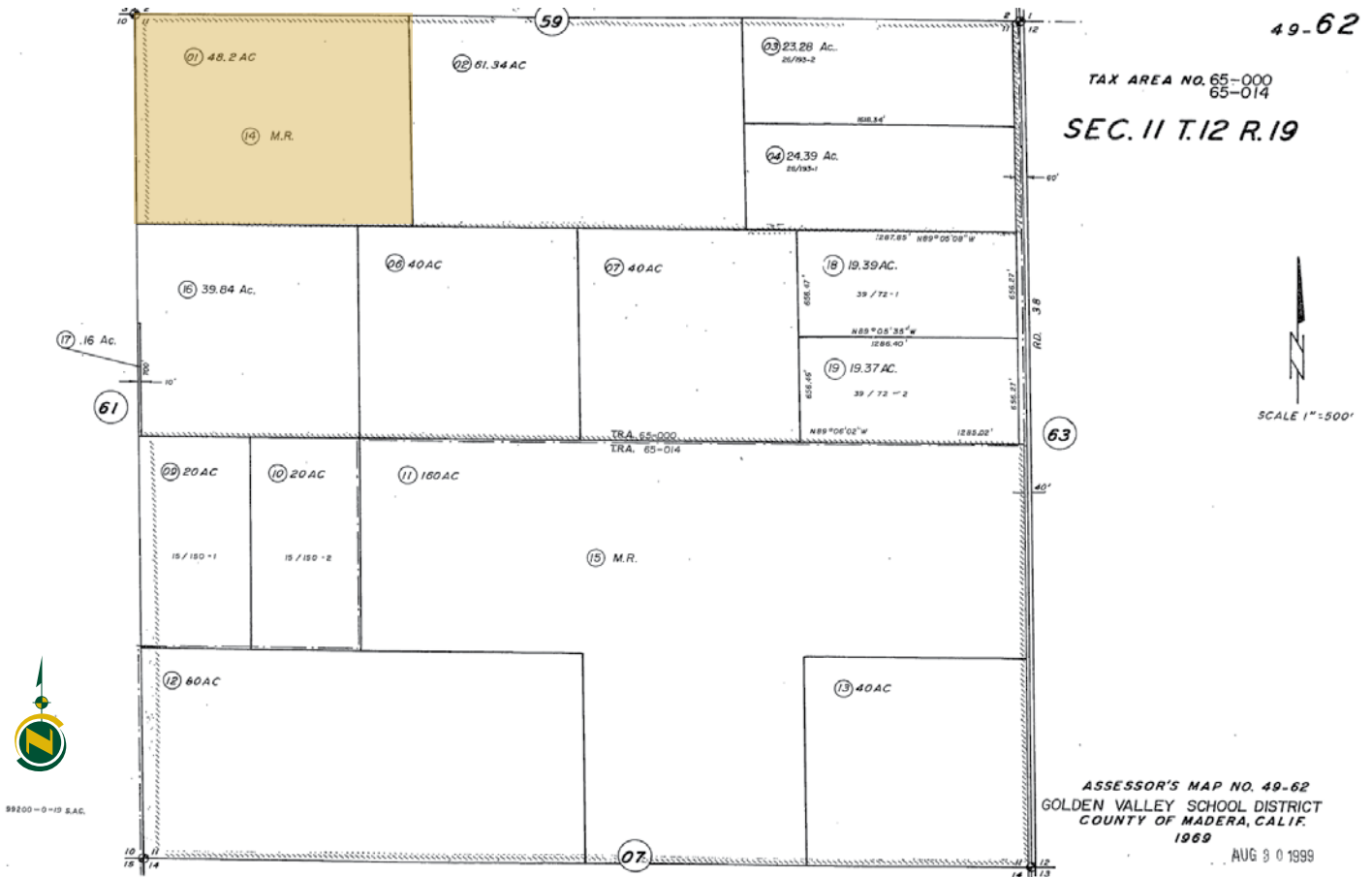
Madera Pistachios

48.20± Assessed Acres

\$1,542,400
(\$32,000 per acre)

LOCATION:	Approximately 1 mile south of Avenue 12 and 1 mile east of Road 36.
LEGAL:	48.20± assessed acres located in a portion of Section 11, T12S, R17E, M.D.B.&M. Madera County APN: 049-620-001-000.
ZONING:	Arv-20 (Agricultural, Rural, Valley – 20 Acre)
PLANTINGS:	The orchard was planted in 3 equal 16 acre blocks in 1972, 1973 and 1974. Pistachios are Kerman variety on Atlantica Rootstock. Spacing is 12' x 24'.
WATER:	One well with a 40 HP pump.
SOILS:	San Joaquin sandy loam Whitney & Rocklin gravelly sandy loams Whitney and Rocklin sandy loams
BUILDINGS/ IMPROVEMENTS:	None.
PRICE/TERMS:	\$1,542,400 cash at the close of escrow. Buyer to reimburse Seller for cultural costs incurred toward the 2021 crop.

ASSESSOR'S PARCEL MAP



PROPERTY PHOTO



LOCATION MAP



Water Disclosure: The Sustainable Groundwater Management Act (SGMA) was passed in 2014, requiring groundwater basins to be sustainable by 2040. SGMA requires a Groundwater Sustainability Plan (GSP) by 2020. SGMA may limit the amount of well water that may be pumped from underground aquifers. Buyers and tenants to a real estate transaction should consult with their own water attorney; hydrologist; geologist; civil engineer; or other environmental professional. Additional information is available at: California Department of Water Resources Sustainable Groundwater Management Act Portal - <https://sgma.water.ca.gov/portal/> Telephone Number: (916) 653-5791

Offices Serving The Central Valley

FRESNO

7480 N Palm Ave, Ste 101
Fresno, CA 93711
559.432.6200

VISALIA

3447 S Demaree Street
Visalia, CA 93277
559.732.7300

BAKERSFIELD

4900 California Ave, Ste 210 B
Bakersfield, CA 93309
661.334.2777



**Download Our
Mobile App!**

pearsonrealty.com/mobileapp

Download on the
App Store

GET IT ON
Google Play

We believe the information contained herein to be correct. It is obtained from sources which we regard as reliable, but we assume no liability for errors or omissions. Policy on cooperation: All real estate licensees are invited to offer this property to prospective buyers. Do not offer to other agents without prior approval.