



SCHUIL & ASSOCIATES
DIVERSIFIED REAL ESTATE

78 Ac. Almonds, Tulare County

CA-137 & Rd 180, California 93221, USA • 78 Ac.

Schuil & Associates

559-734-1700 • www.schuil.com

CalBRE: 00845607



SCHUIL & ASSOCIATES
DIVERSIFIED REAL ESTATE

Listing Details

Size: +/-78 Assessed Acres

Location: Southeast corner of Road 180 and Hwy 137, Tulare County

Plantings: Non-Pareil/Monterey/Fritz planted on Nemaguard rootstock in 2014. 22 x 18 spacing

Water: 100HP electric irrigation well
Lindmore Irrigation District

Soil: Excellent – Grade 1 soils

APN: 197-070-013 – Tulare County

Remarks: Great almond ranch just coming into full production. Excellent soils.

SGMA The Sustainable Ground Water Management Act (SGMA) passed in 2014 requiring groundwater basins to be sustainable by 2040. SGMA requires a Groundwater Sustainability Plan (GSP) by 2020. Said plans may limit the amount of well water that may be pumped. The subject property is in the Kaweah sub basin and in the San Joaquin Valley Groundwater Sustainability Agency (GSA).

Price: \$3,081,200

Contact: Arnel Koster
559-734-1700 Ext. 108 (o)
559-805-6347 (m)
arnel@schuil.com

The information contained in this brochure is from reliable sources and is believed to be correct, but is NOT guaranteed.

5020 W Mineral King Avenue, Visalia, CA • 559-734-1700 • www.schuil.com

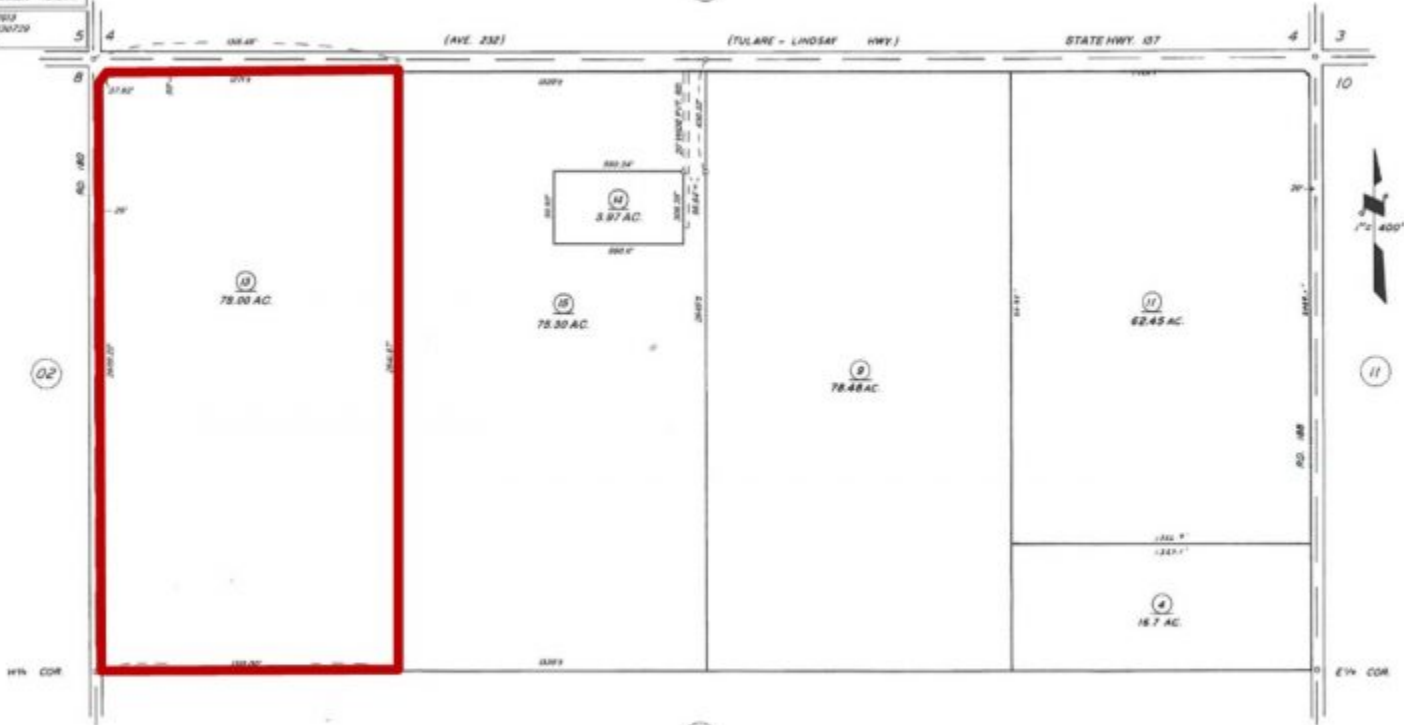


N 1/2 SEC. 9, T.20S., R.26E., M.D.B.&M.

TAX CODE AREA **197-07**
108-003

DISCLAIMER
THIS MAP WAS PREPARED FOR LOCAL PROPERTY ASSESSMENT PURPOSES ONLY. THE PARCELS SHOWN HEREON MAY NOT COMPLY WITH STATE AND LOCAL ZONING ORDINANCES. NO LIABILITY IS ASSUMED FOR THE USE OF THE INFORMATION HEREON.

REVISED: 03/08/2013
REASON: 2013-0030729
CAD TECH: ABS



ASSESSOR'S MAPS BK. 197, PG. 07
COUNTY OF TULARE, CALIF.

NOTE - ASSESSOR'S BLOCK NUMBERS SHOWN BY ELLIPSES
ASSESSOR'S PARCEL NUMBERS SHOWN IN CIRCLES



The information contained in this brochure is from reliable sources and is believed to be correct, but is NOT guaranteed.

5020 W Mineral King Avenue, Visalia, CA • 559-734-1700 • www.schuil.com

