



SCHUIL & ASSOCIATES
DIVERSIFIED REAL ESTATE

662 Ac. Rangeland, Woodlake

5020 W Mineral King Visalia CA 93291 • 662.15 Ac.

Schuil & Associates

559-734-1700 • www.schuil.com

CalBRE: 00845607



SCHUIL & ASSOCIATES
DIVERSIFIED REAL ESTATE

Listing Details

Size: +/-662.15 Assessed Acres

Location: The ranch is located northwest of the city of Woodlake in Tulare County. The entrance and barn are located on the west side of Road 196 and just north of Avenue 366.

Plantings: Rangeland

Water: Shared wells – contact for more information

Structures: Barn

APN: 053-070-018 and 018; 053-090-038 and 042; 053-100-025; 053-110-042, 043 and 044

Remarks: Rare opportunity to own a piece of Colvin Mountain. this property has amazing views that include the mountains, the valley floor, and even Bravo Lake. The ranch was previously used as a cattle operation and has access off Tulare County maintained roads. Please call for your private showing.

Contact:	Marc Schuil	Scott Schuil	Jonathan Verhoeven
	559-280-1750	559-859-9734	559-707-5658
	marc@schuil.com	scott@schuil.com	jonathan@schuil.com
	DRE: 008151572	DRE: 01877812	DRE: 01966852

Price: \$980,000

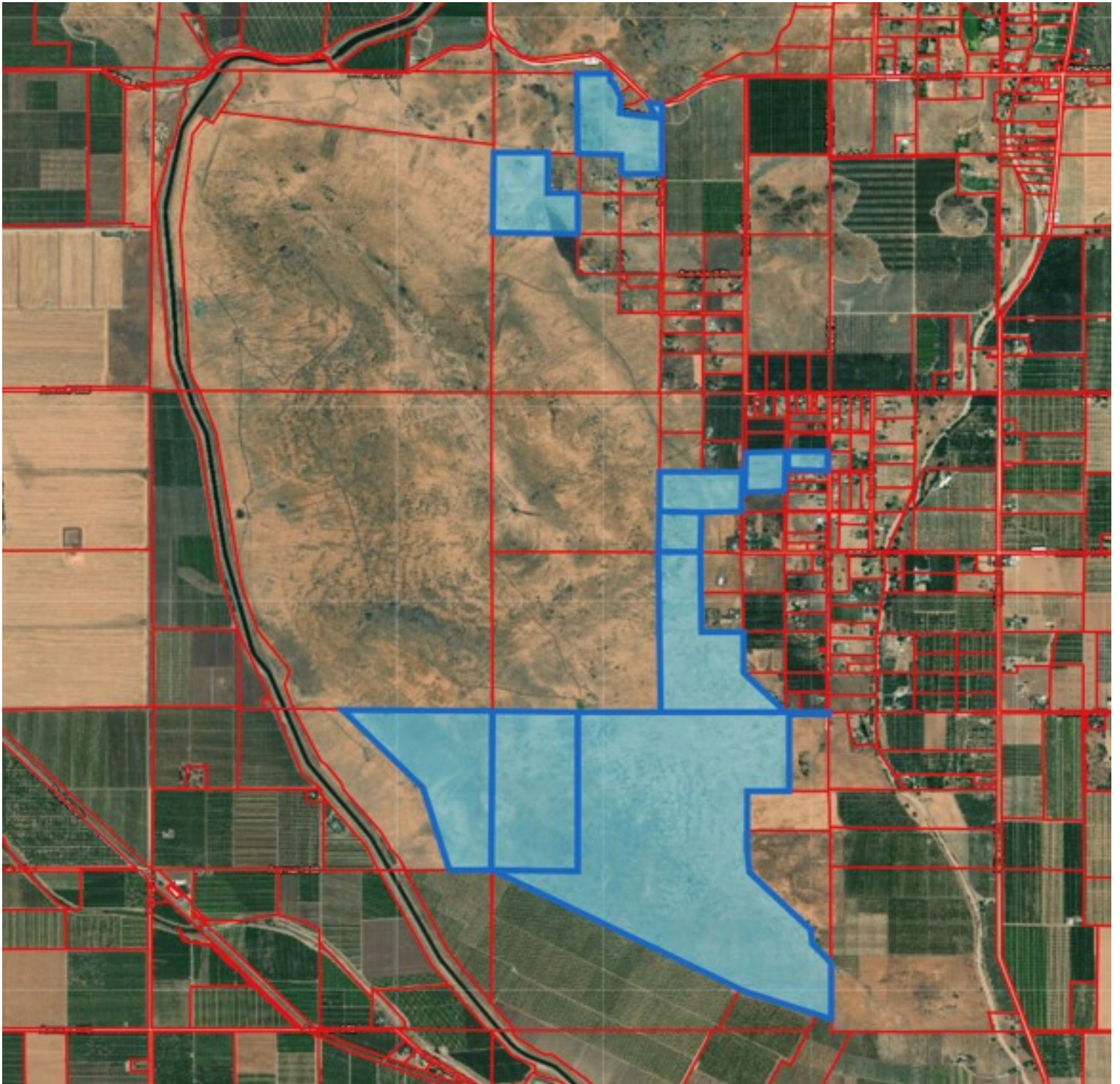
The information contained in this brochure is from reliable sources and is believed to be correct, but is NOT guaranteed.

5020 W Mineral King Avenue, Visalia, CA • 559-734-1700 • www.schuil.com



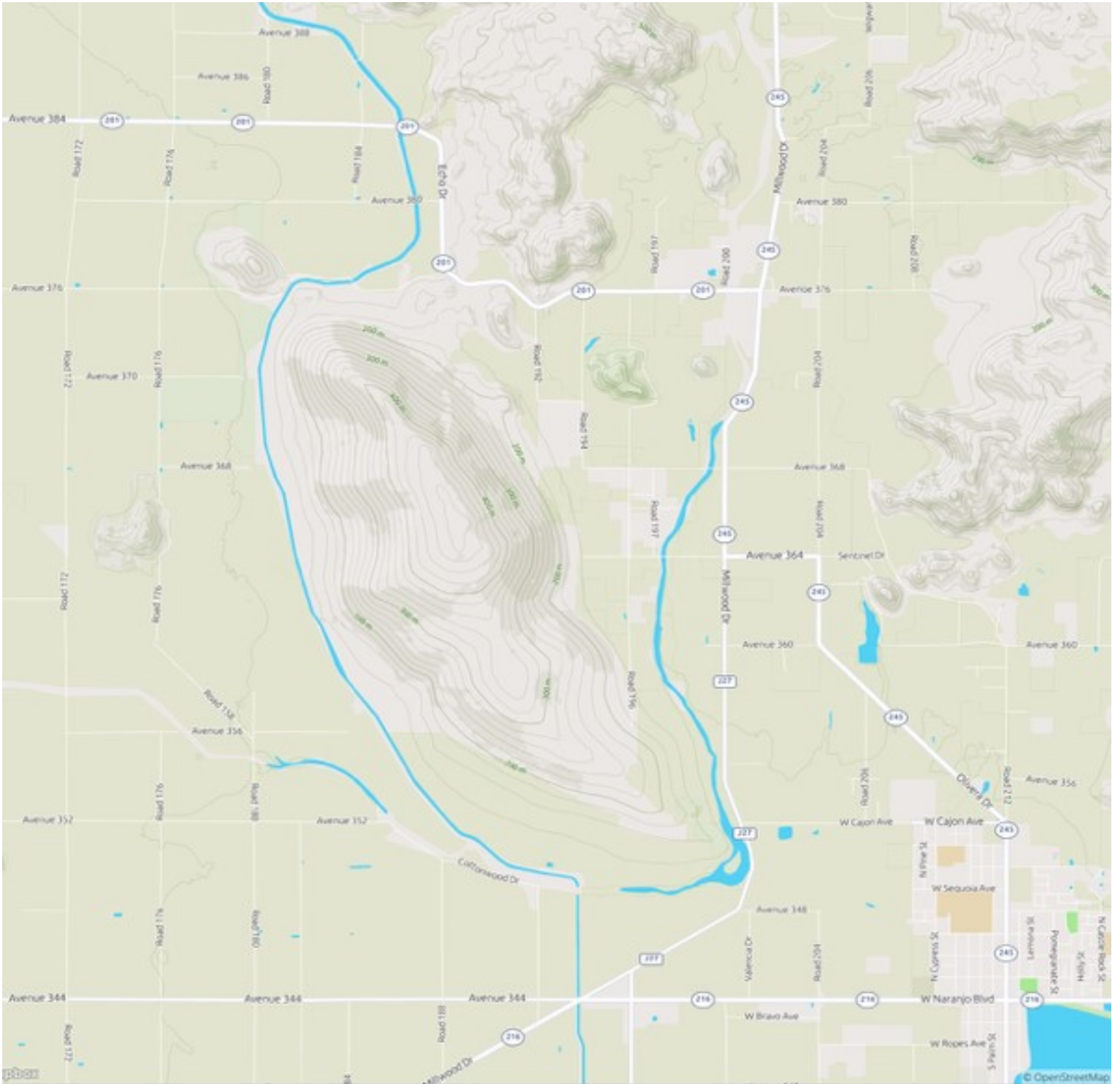
SCHUIL & ASSOCIATES
DIVERSIFIED REAL ESTATE

Parcel Map



The information contained in this brochure is from reliable sources and is believed to be correct, but is NOT guaranteed.

5020 W Mineral King Avenue, Visalia, CA • 559-734-1700 • www.schuil.com



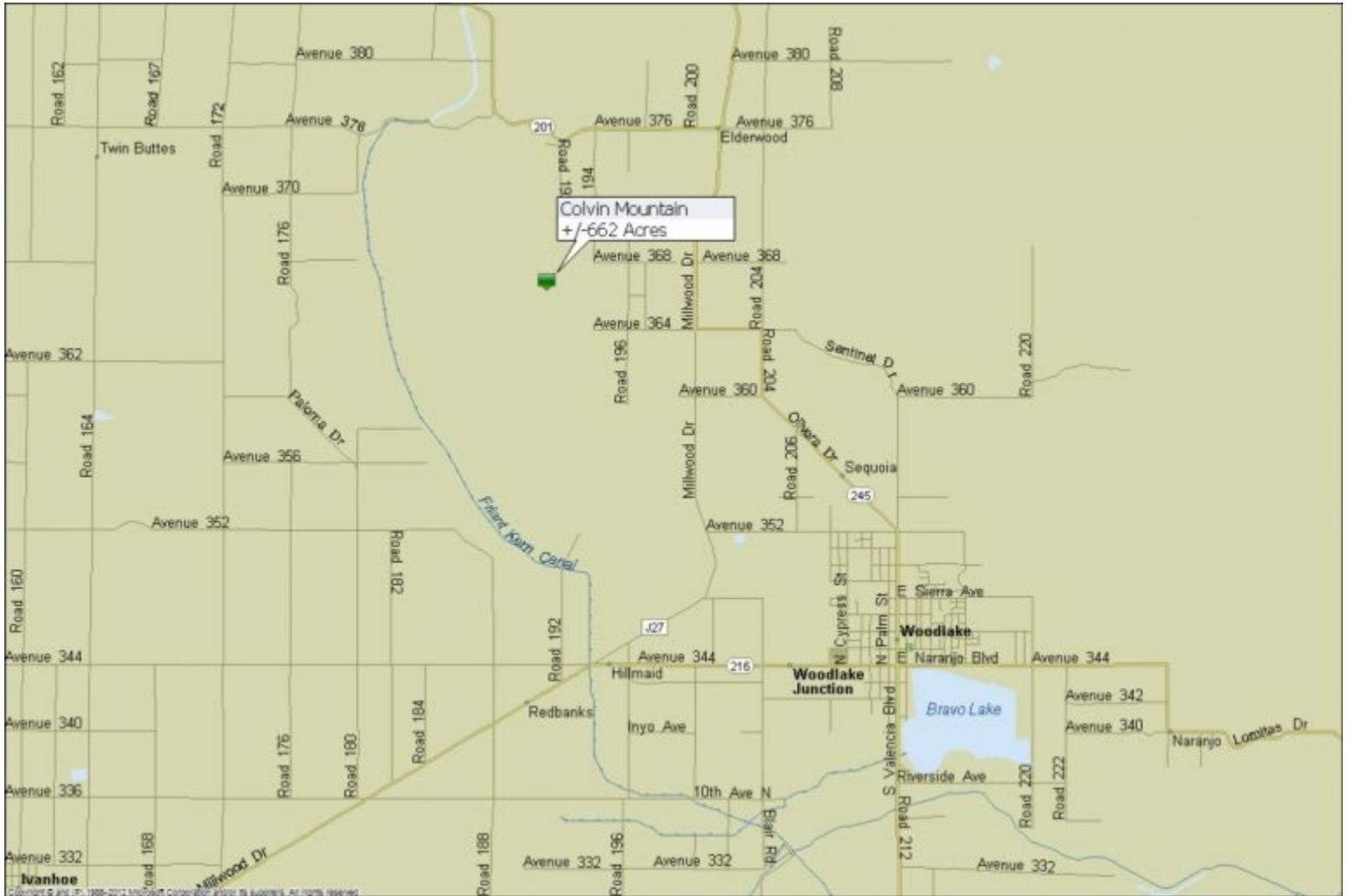
The information contained in this brochure is from reliable sources and is believed to be correct, but is NOT guaranteed.

5020 W Mineral King Avenue, Visalia, CA • 559-734-1700 • www.schuil.com



SCHUIL & ASSOCIATES
DIVERSIFIED REAL ESTATE

Location Map



The information contained in this brochure is from reliable sources and is believed to be correct, but is NOT guaranteed.

5020 W Mineral King Avenue, Visalia, CA • 559-734-1700 • www.schuil.com

