



SCHUIL & ASSOCIATES
DIVERSIFIED REAL ESTATE

34.22 Ac. Walnuts and Home, Lindsay

22608 Rd 180, Lindsay, CA 93247, USA • 34.22 Ac.

Schuil & Associates

559-734-1700 • www.schuil.com

CalBRE: 00845607



SCHUIL & ASSOCIATES
DIVERSIFIED REAL ESTATE

Listing Details

Size: +/-34.22 Assessed Acres

Location: 22608 Road 180, Lindsay
East side of Road 180, south of Hwy 137.

Plantings: Chandler Walnuts, planted in 2009

Water: 25HP electric irrigation well
5HP domestic submersible well
Lindmore Irrigation District

Soil: Excellent – Grade 1 soils

APN: 197-080-013 and 104 – Tulare County

Residence: Custom +/-3,450 sq. ft. 3-bdrm., 3-bath home with home office and workout room.

Price: \$1,750,000

Contact: Arnel Koster
559-734-1700 Ext. 108 (o)
559-805-6347 (m)
arnel@schuil.com

The information contained in this brochure is from reliable sources and is believed to be correct, but is NOT guaranteed.

5020 W Mineral King Avenue, Visalia, CA • 559-734-1700 • www.schuil.com



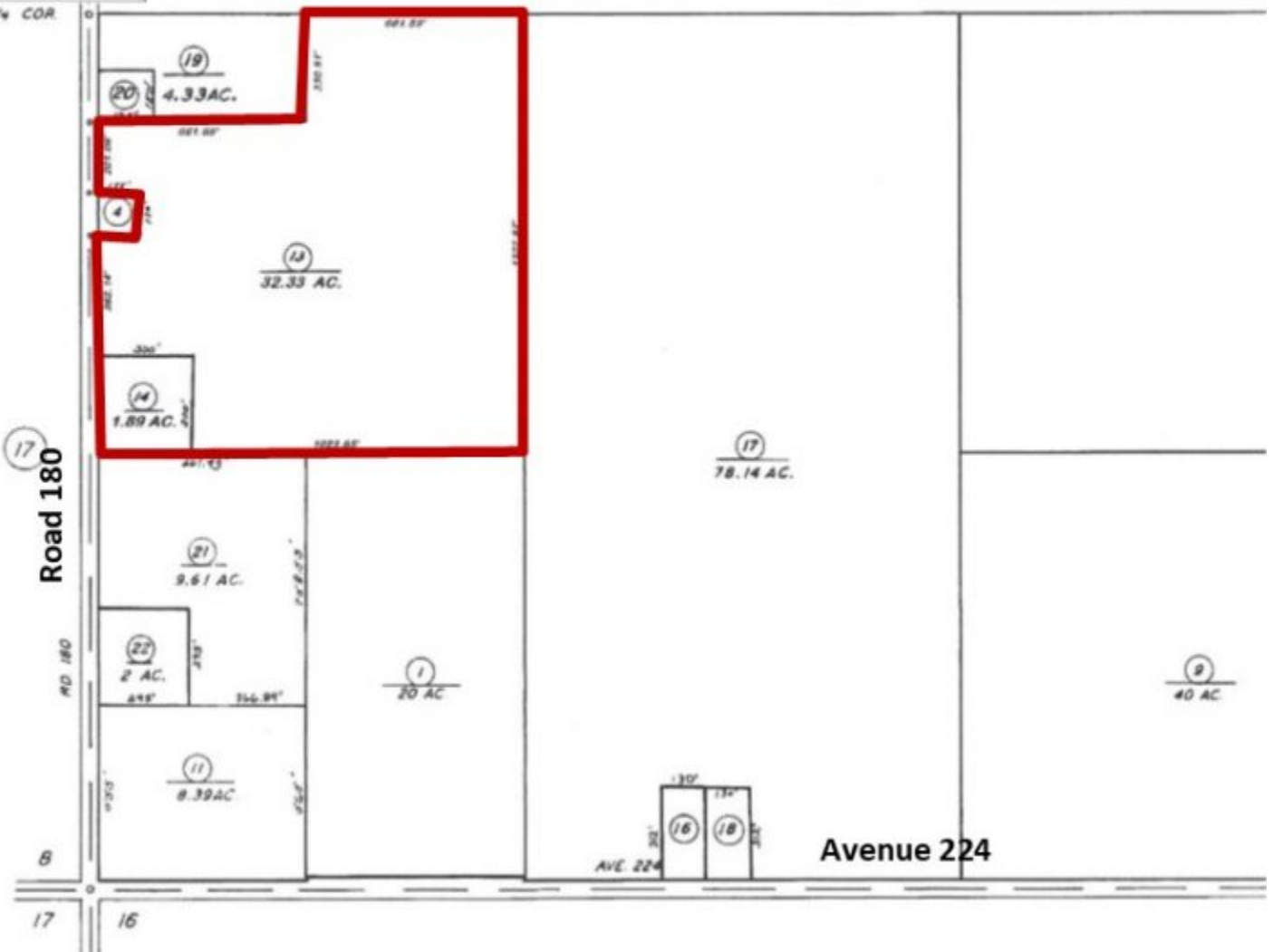


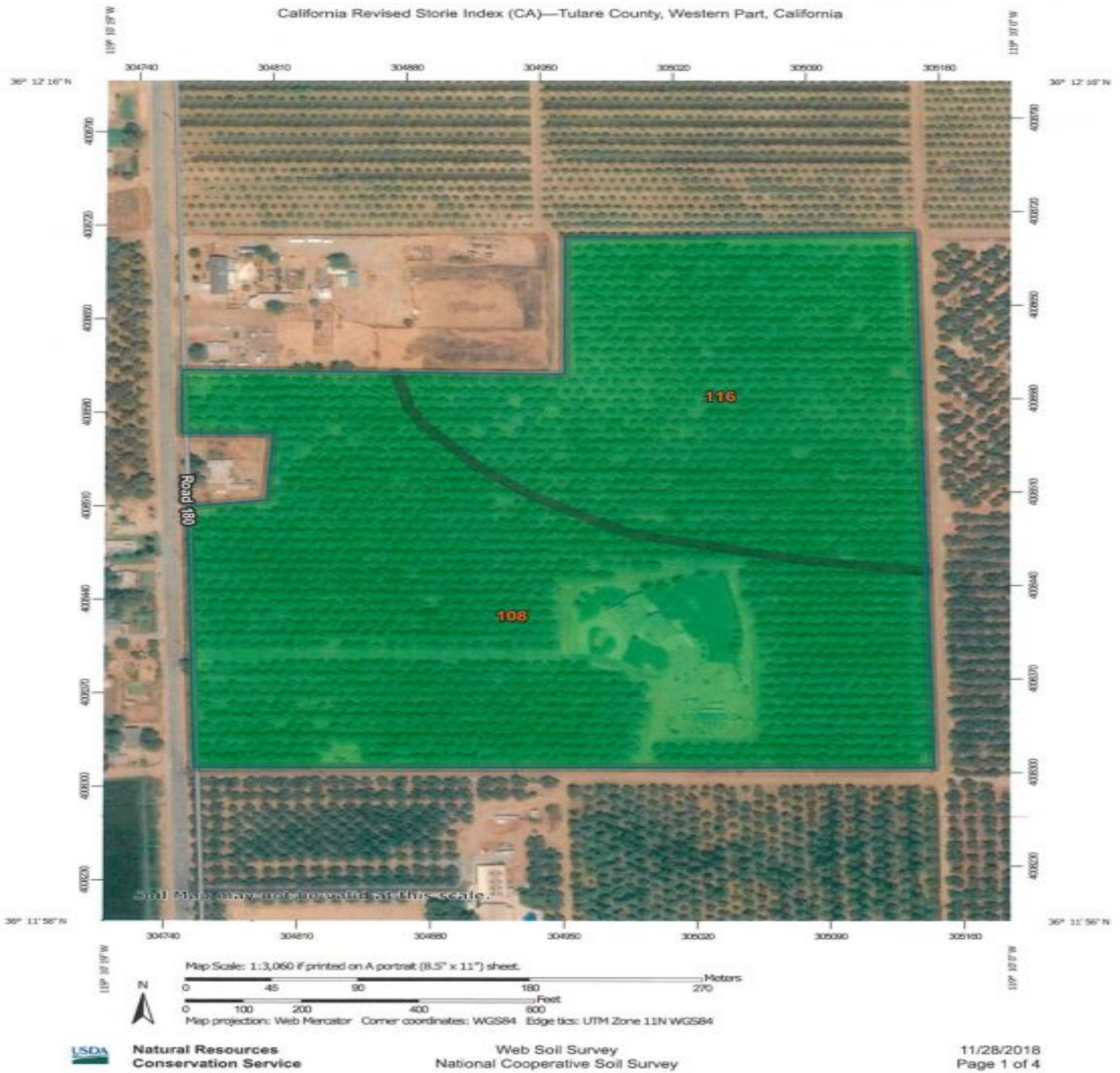
S 1/2 SEC. 9, T.20S., R.26E., M.D.B. & M.

DISCLAIMER
THIS BMP WAS PREPARED FOR LOCAL PROPERTY ASSESSMENT PURPOSES ONLY. THE PARCELS SHOWN HEREON MAY NOT COMPLY WITH STATE AND LOCAL SUBDIVISION ORDINANCES. NO LIABILITY IS ASSUMED FOR THE USE OF THE INFORMATION HEREON.

REVISED: 5/19/2009
REASON: 2008-0044140
CAD TECH: JLC

07





The information contained in this brochure is from reliable sources and is believed to be correct, but is NOT guaranteed.

5020 W Mineral King Avenue, Visalia, CA • 559-734-1700 • www.schuil.com



