



Ave 376

Rd 86

J19



SCHUIL & ASSOCIATES
DIVERSIFIED REAL ESTATE

239.35 Ac. Open Land, Dinuba

Road 80, Dinuba • 239.35 Ac.

Schuil & Associates

559-734-1700 • www.schuil.com

CalBRE: 00845607



SCHUIL & ASSOCIATES
DIVERSIFIED REAL ESTATE

Listing Details

Size: +/-239.35 Tax Assessed Acres

Location : East side of Road 80, north and south side of Avenue 376, Dinuba, Tulare County.

Plantings: Open land, currently planted to wheat.

Water: Four (4) 40HP wells
Alta Irrigation District with turnout.

Soils: Crosscreek-Kai, Quonal-Lewis and Calgro-Calgro

Legal: APN: 047-010-024; 047-060-035 and 14

Buildings: None

Remarks: Acreage is approximate and any potential buyer should complete their investigation of total acreage.

Price: \$7,192,000

Contact: Philip Heynen
559-734-1700 Ext. 109 (o)
559-936-6752 (m)
philheyne@yahoo.com
CalBRE #01442264

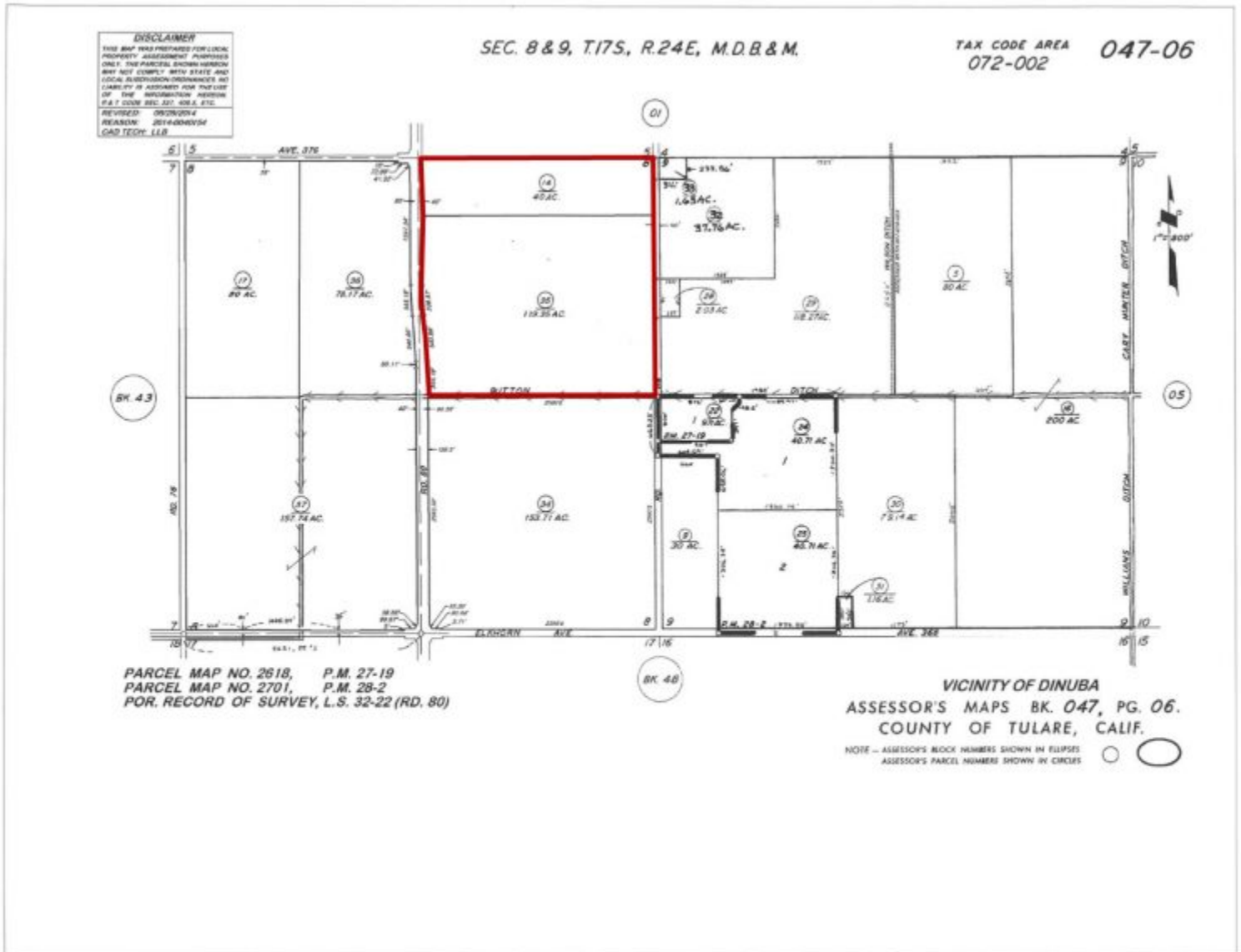
The information contained in this brochure is from reliable sources and is believed to be correct, but is NOT guaranteed.

5020 W Mineral King Avenue, Visalia, CA • 559-734-1700 • www.schuil.com



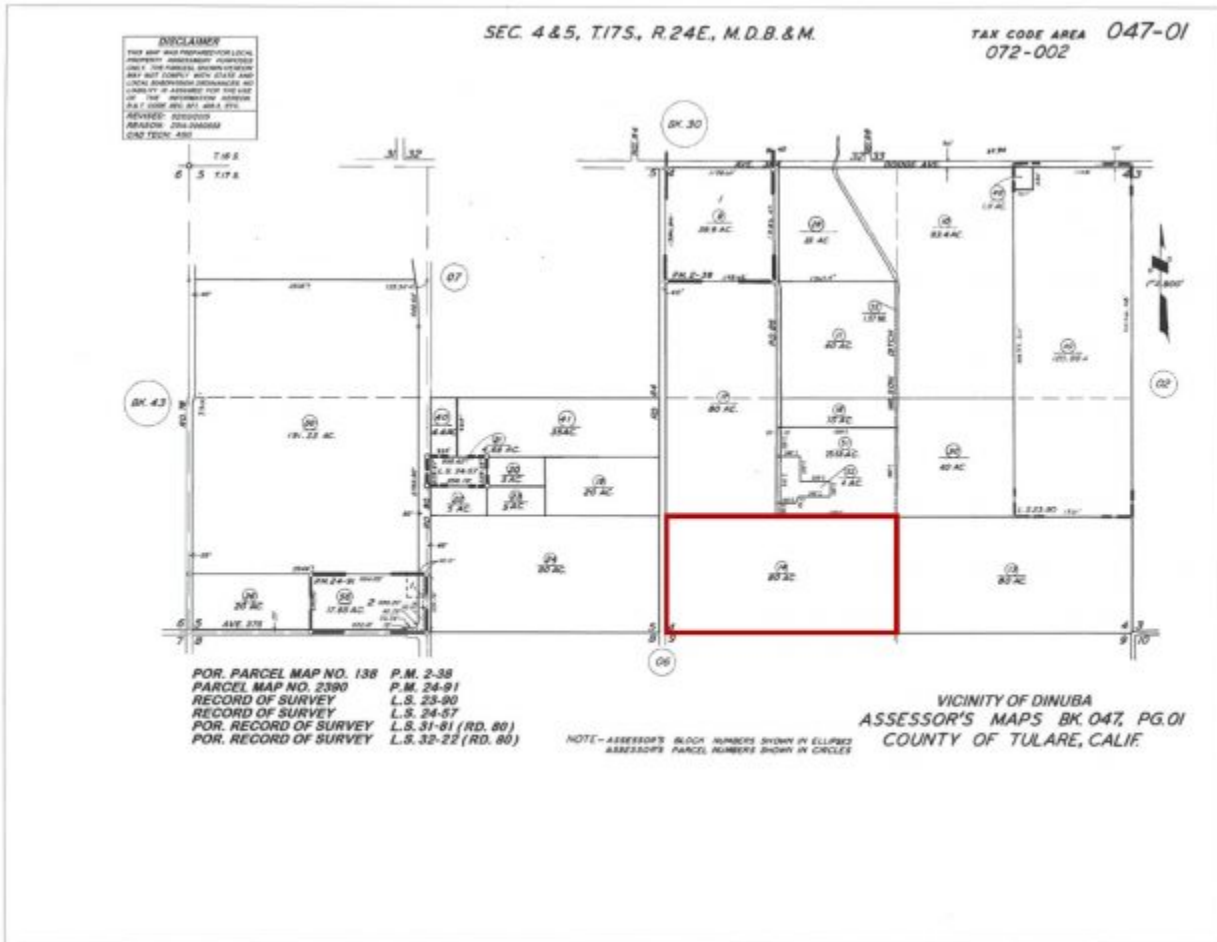
SCHUIL & ASSOCIATES
DIVERSIFIED REAL ESTATE

Aerial Map



The information contained in this brochure is from reliable sources and is believed to be correct, but is NOT guaranteed.

5020 W Mineral King Avenue, Visalia, CA • 559-734-1700 • www.schuil.com



Groundwater Disclosure: The Sustainable Groundwater Management Act (SGMA) requires groundwater basins to be sustainable by 2040. SGMA requires a Groundwater Sustainability Plan (GSP) by 2020. Said plans may limit ground water pumping. For more information please visit the SGMA web site at www.sgma.water.ca.gov/portal/.



- Crosscreek-Kai – Good soil
- Quonal-Lewis – Fair soil
- Callgro-Calgro – Poor soil



