



**SCHUIL & ASSOCIATES**  
DIVERSIFIED REAL ESTATE

# 218.43 Ac. Open Land, Lindsay, CA

23620 Rd 180, Lindsay, CA 93247, USA • 218.43 Ac.

**Schuil & Associates**

559-734-1700 • [www.schuil.com](http://www.schuil.com)

CalBRE: 00845607



**SCHUIL & ASSOCIATES**  
DIVERSIFIED REAL ESTATE

## Listing Details

---

**Size:** +/-218.43 Assessed Acres

**Location:** 23620 Road 180, Lindsay, CA  
From Hwy 137 go 1/2 mile north on Road 180, property is on east side of road.

**Plantings:** Open land planted to winter wheat, summer corn and alfalfa.

**Water:** 150HP well  
60HP well  
40HP well  
30HP well  
Second source of water is from City of Lindsay Wastewater Easement (receives +/-1 acre foot of water per acre per year) on +/-75.77 and 68.16 acre parcels (+/-149.93 acres total).

**APN:** 197-050-003, 004 and 006  
Please note that Seller is parceling out +/-4 acres to include home, barn and shop. New parcel number will be generated.

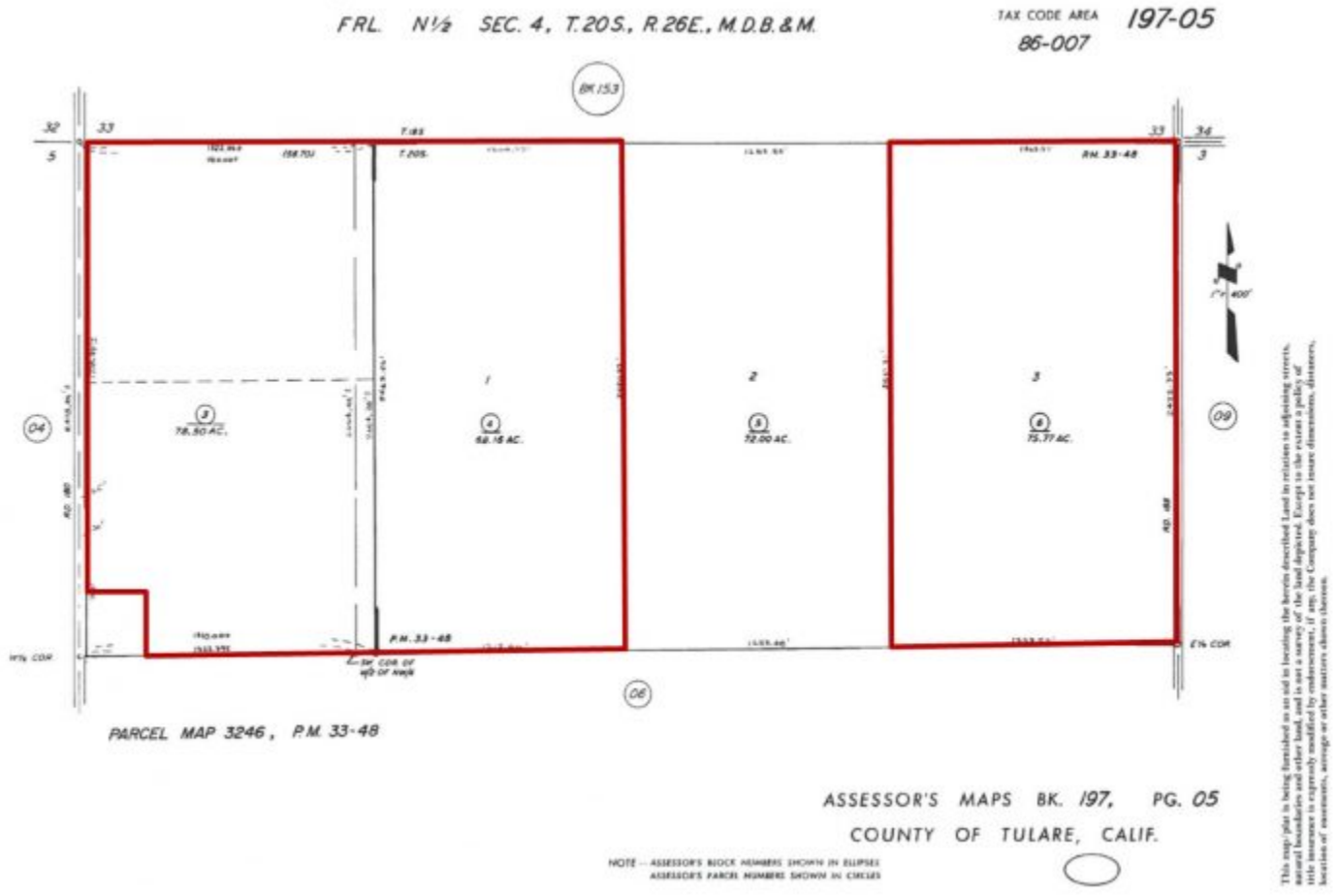
**Price:** \$3,500,000

**Contact:** Arnel Koster  
559-734-1700 Ext. 108 (o)  
559-805-6347 (m)  
arnel@schuil.com

---

The information contained in this brochure is from reliable sources and is believed to be correct, but is NOT guaranteed.

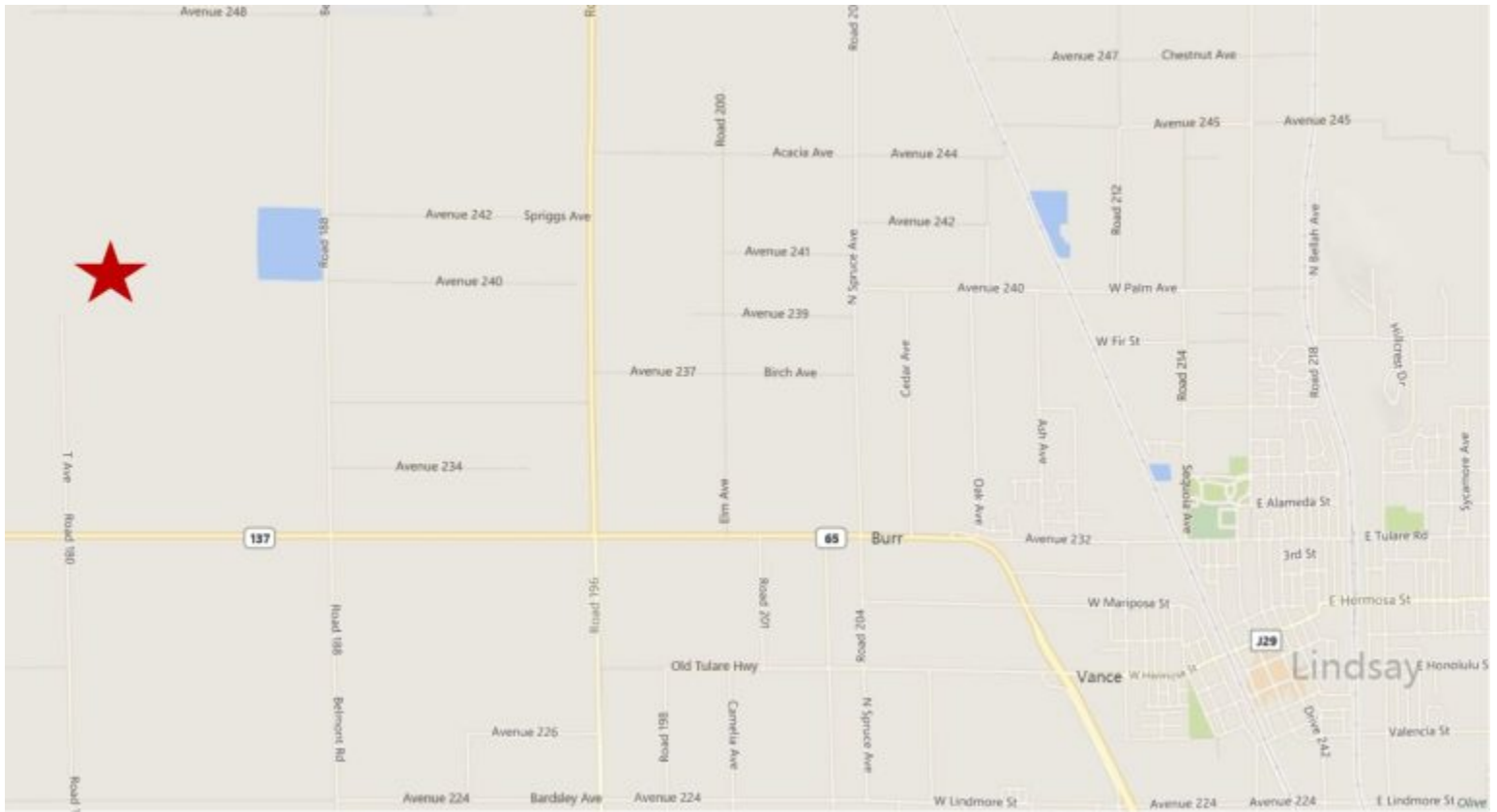
5020 W Mineral King Avenue, Visalia, CA • 559-734-1700 • [www.schuil.com](http://www.schuil.com)



Groundwater Disclosure: The Sustainable Groundwater Management Act (SGMA) requires groundwater basins to be sustainable by 2040. SGMA requires a Groundwater Sustainability Plan (GSP) by 2020. Said plans may limit ground water pumping. For more information please visit the SGMA web site at [www.sgma.water.ca.gov/portal/](http://www.sgma.water.ca.gov/portal/).







---

The information contained in this brochure is from reliable sources and is believed to be correct, but is NOT guaranteed.

5020 W Mineral King Avenue, Visalia, CA • 559-734-1700 • [www.schuil.com](http://www.schuil.com)

