



SCHUIL & ASSOCIATES
DIVERSIFIED REAL ESTATE

195.61 Ac. Almonds & Pomegranates, Huron

Huron, CA 93234, USA • 195.61 Ac.

Schuil & Associates

559-734-1700 • www.schuil.com

CalBRE: 00845607



SCHUIL & ASSOCIATES
DIVERSIFIED REAL ESTATE

Listing Details

Size: +/-195.61 Assessed Acres

Location : Property is located in Fresno County, west of the community of Huron.
See the attached location map.

Plantings: +/-91 Ac. Almonds, approx. 13 years old.
50% Nonpareil, 25% Aldrich and 25% Avalon.
Nemaguard rootstock and 18 x 22 spacing.

+/-97 Ac. Pomegranates
Wonderful variety, maybe a few Early Wonderful planted throughout.
7 x 14 spacing and are approx. 11 years old.

+/- 4 Ac. Equipment yard/area.

Water: Westlands Water District.
Crops irrigated with dual line drip on almonds and single drip on pomegranates.

Soils: Excellent – Grade 1 soils

Zoning: AE-20 and the property is in the Williamson Act.

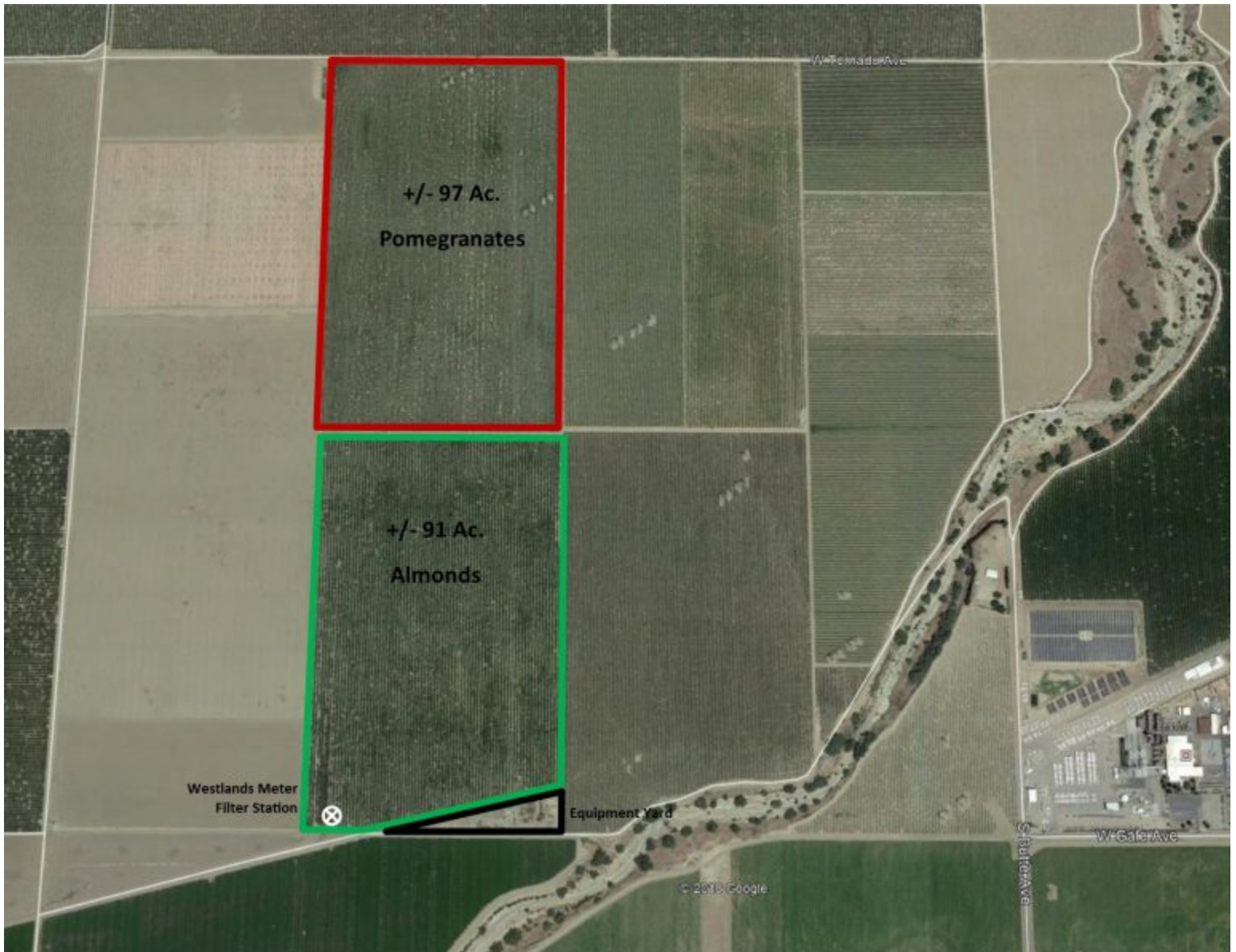
Legal: APN: 075-040-33s and 075-040-56s – Fresno County

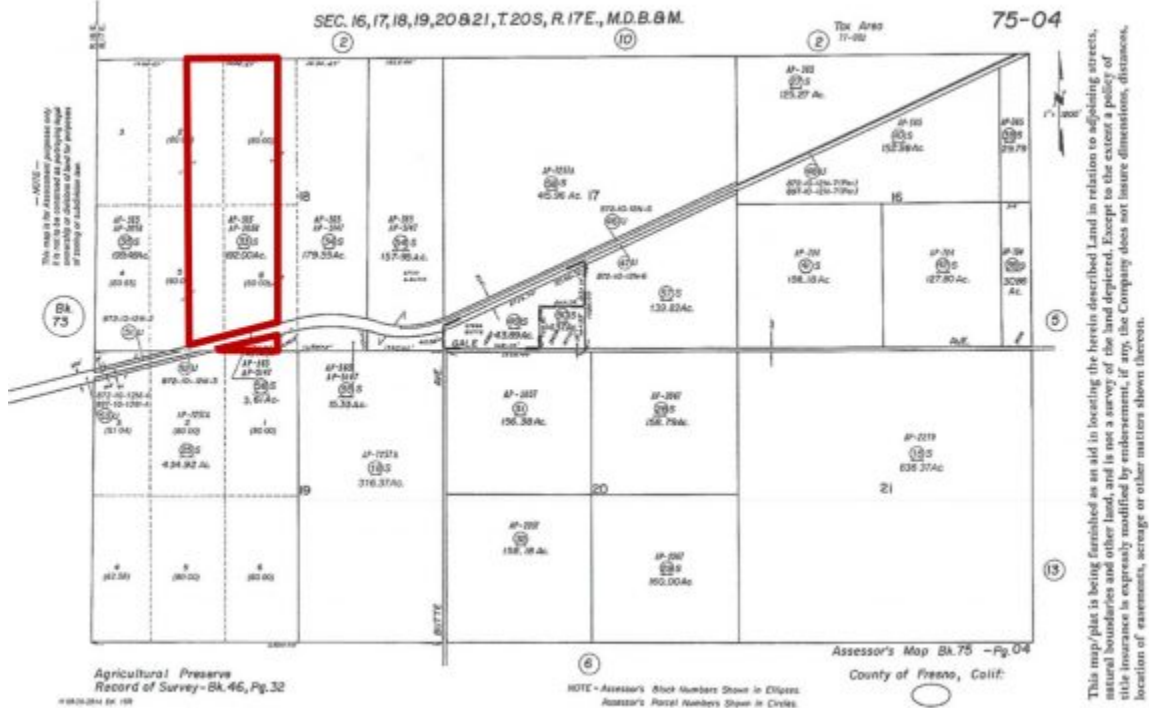
Price: \$2,650,000

Contact: Rick Schuil
559-734-1700 Ext. 200 (o)
559-859-4484 (m)
rick@schuil.com
CalBRE #00961925

The information contained in this brochure is from reliable sources and is believed to be correct, but is NOT guaranteed.

5020 W Mineral King Avenue, Visalia, CA • 559-734-1700 • www.schuil.com



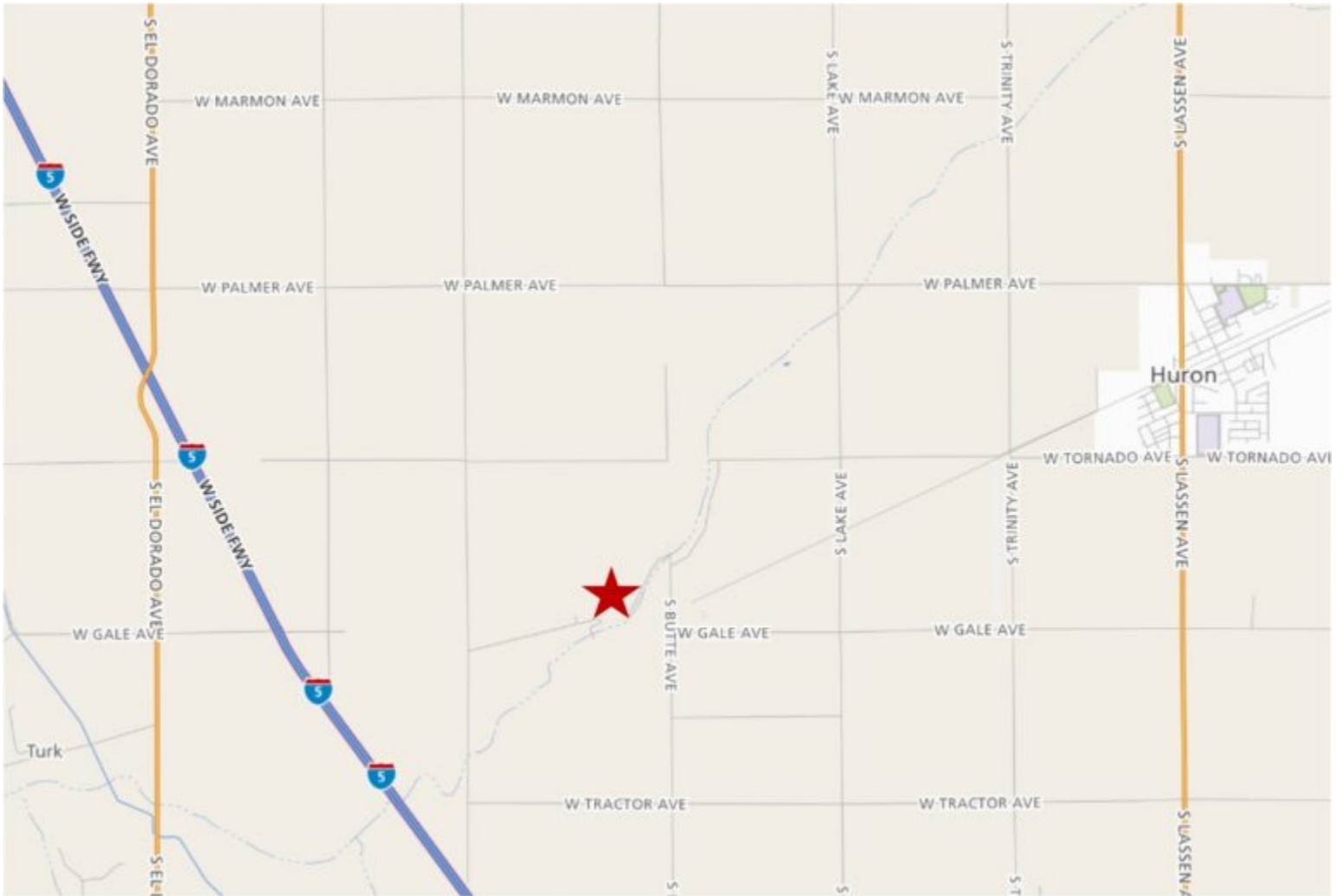


Groundwater Disclosure: The Sustainable Groundwater Management Act (SGMA) requires groundwater basins to be sustainable by 2040. SGMA requires a Groundwater Sustainability Plan (GSP) by 2020. Said plans may limit ground water pumping. For more information please visit the SGMA web site at www.sgma.water.ca.gov/portal/.



SCHUIL & ASSOCIATES
DIVERSIFIED REAL ESTATE

Location Map



The information contained in this brochure is from reliable sources and is believed to be correct, but is NOT guaranteed.

5020 W Mineral King Avenue, Visalia, CA • 559-734-1700 • www.schuil.com

