



SCHUIL & ASSOCIATES
REAL ESTATE



1.89 Ac. Development Opportunity, Visalia

S Pinkham St, Visalia, CA 93292, USA

CalBRE: 00845607

Schuil & Associates

559-734-1700 · www.schuil.com



SCHUIL & ASSOCIATES
REAL ESTATE

SIZE:

1.89 Assessed Acres

LOCATION:

Westside of Pinkham Street, south of Nobile Avenue, Visalia

ZONING:

R-M-2: Multi-Family Residential

3,000 sq. ft. minimum site area per dwelling unit

APN:

100-050-012 – Tulare County

PRICE:

\$225,000

CONTACT:

Marc Schuil
559-734-1700 ext.102
(o)
559-280-1750 (m)
marc@schuil.com
CalBRE #00815172

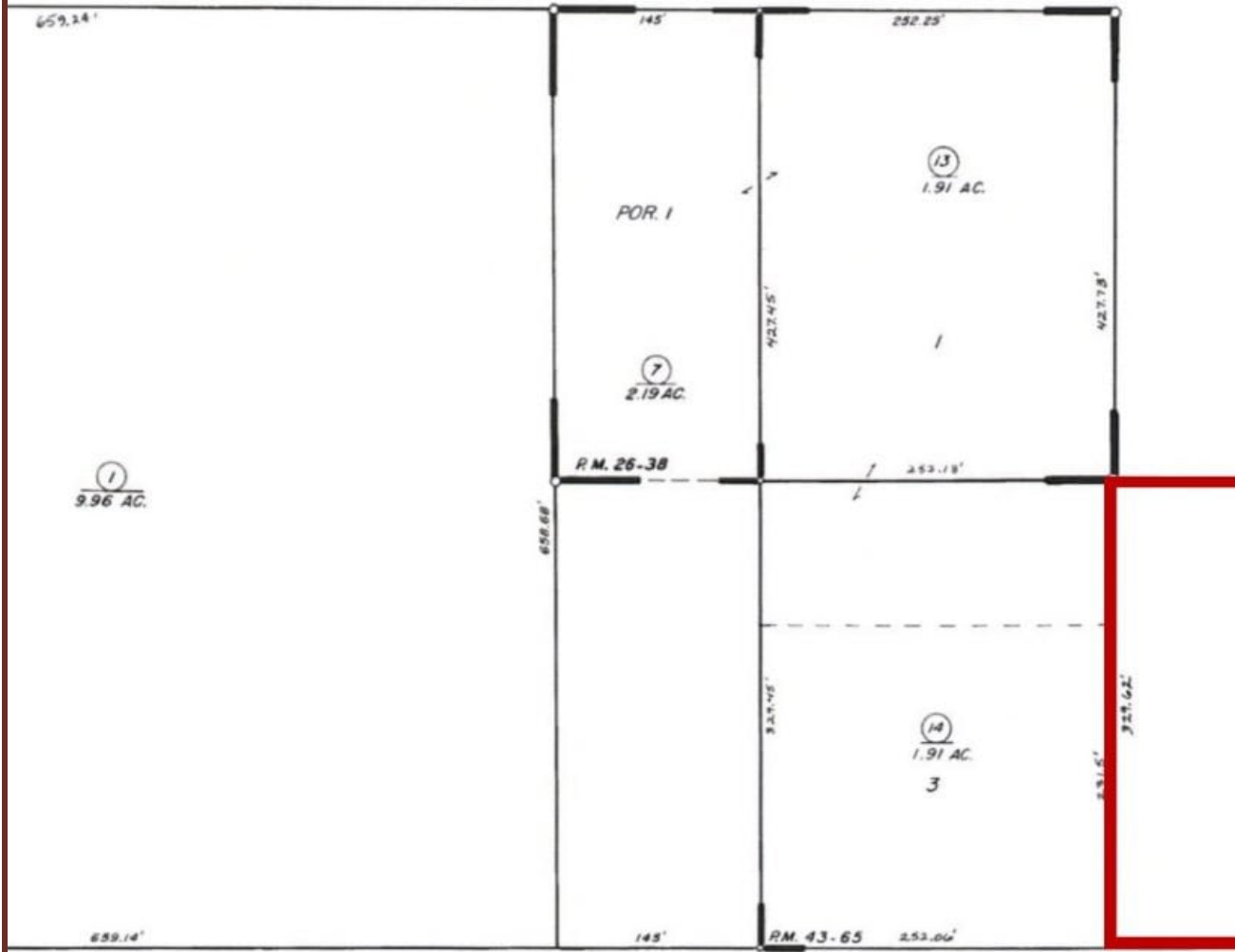
Jonathan Verhoeven
559-734-1700 ext.201
(o)
559-707-5658 (m)
jonathan@schuil.com
CalBRE #01966852

Scott Schuil
559-734-1700 ext.106
(o)
559-859-9734 (m)
scott@schuil.com
CalBRE #01877812



1/4 OF NW 1/4 SEC. 33, T.18S., R.25E., M.D.B. & M.

04



P.M. 26-38
P.M. 43-65

25

24

CITY OF
ASSESSOR'S MAPS
COUNTY OF T

NOTE — ASSESSOR'S BLOCK NUMBERS SHOWN IN ELLIPSES
ASSESSOR'S PARCEL NUMBERS SHOWN IN CIRCLES

